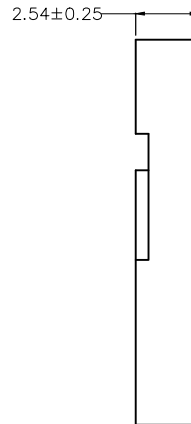
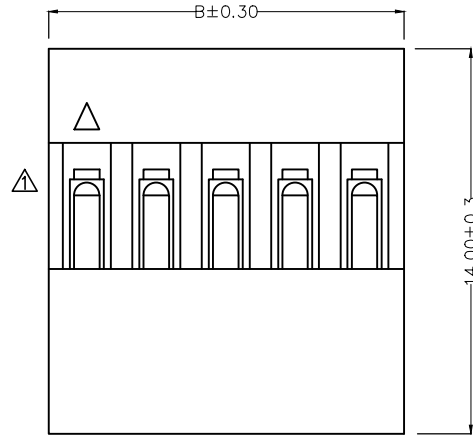
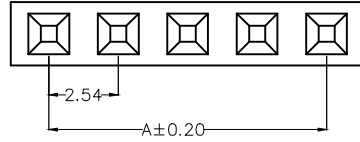


1 2 3 4 5 6 7 8

REV	LOCATIONS	DESCRIPTION	DATE	REVISER	APPD
1	△	structure changes	26/APR/22	MATT	CHERRY

Notes

- 1. Material: PBT UL94V-0
- 2. Temperature Range-Operating: -25C° ~ +85C°
- 3. Applicable Terminal: FT25403



Ordering Information

FHG 254 03 — S XX M 2 K6 B
 1 2 3 4 5 6 7 8 9



1	Category FHG-Housing	2	Series Number 254-Pitch2.54mm	3	Distinction No. 03	4	Row Option S-Single row	5	Circuits XX
6	Entry Type M-Male	7	Material-Resin 2-PBT	8	Color-Resin K6-Black	9	Packaging B-PE Bag		

 THIRD ANGLE PROJECTION	GENERAL TOLERANCES (UNLESS SPECIFIED)		APPROVE BY FRANK	DATE 25/JUN/13	PART NO. FHG25403-SXXM2K6B	ITEM NO. FHG25403	 Leader Of Industry
	X.±0.30	X.±5'	CHECKED BY JACOB	DATE 25/JUN/13	TITLE Wire to Board Pitch 2.54mm(Housing)		
DESIGN UNITS Metric	X.X±0.20	.X'±2'	DRAWN BY CHERRY	DATE 25/JUN/13	THIS DRAWING CONTAINS INFORMATION THAT IS PROPRIETARY TO TXGA INDUSTRIAL ELECTRONICS(S.Z)CO.,LTD AND SHOULD NOT BE USED WITHOUT WRITTEN PERMISSION		
SCALE 5:1	SIZE A4	X.XXX±0.10	.XX'±1'	.XXX'±0.5'			

1 2 3 4 5 6 7 8

REV	LOCATIONS	DESCRIPTION	DATE	REVISER	APPD

Circuits (n)	Part No.	Dimensions(mm)		Circuits (n)	Part No.	Dimensions(mm)	
		A	B			A	B
1	FHG25403-S01M2K6B	-	2.54	21	FHG25403-S21M2K6B	50.80	53.34
2	FHG25403-S02M2K6B	2.54	5.08	22	FHG25403-S22M2K6B	53.34	55.88
3	FHG25403-S03M2K6B	5.08	7.62	23	FHG25403-S23M2K6B	55.88	58.42
4	FHG25403-S04M2K6B	7.62	10.16	24	FHG25403-S24M2K6B	58.42	60.96
5	FHG25403-S05M2K6B	10.16	12.70	25	FHG25403-S25M2K6B	60.96	63.50
6	FHG25403-S06M2K6B	12.70	15.24	26	FHG25403-S26M2K6B	63.50	66.04
7	FHG25403-S07M2K6B	15.24	17.78	27	FHG25403-S27M2K6B	66.04	68.58
8	FHG25403-S08M2K6B	17.78	20.32	28	FHG25403-S28M2K6B	68.58	71.12
9	FHG25403-S09M2K6B	20.32	22.86	29	FHG25403-S29M2K6B	71.12	73.66
10	FHG25403-S10M2K6B	22.86	25.40	30	FHG25403-S30M2K6B	73.66	76.20
11	FHG25403-S11M2K6B	25.40	27.94	31	FHG25403-S31M2K6B	76.20	78.74
12	FHG25403-S12M2K6B	27.94	30.48	32	FHG25403-S32M2K6B	78.74	81.28
13	FHG25403-S13M2K6B	30.48	33.02	33	FHG25403-S33M2K6B	81.28	83.82
14	FHG25403-S14M2K6B	33.02	35.56	34	FHG25403-S34M2K6B	83.82	86.36
15	FHG25403-S15M2K6B	35.56	38.10	35	FHG25403-S35M2K6B	86.36	88.90
16	FHG25403-S16M2K6B	38.10	40.64	36	FHG25403-S36M2K6B	88.90	91.44
17	FHG25403-S17M2K6B	40.64	43.18	37	FHG25403-S37M2K6B	91.44	93.98
18	FHG25403-S18M2K6B	43.18	45.72	38	FHG25403-S38M2K6B	93.98	96.52
19	FHG25403-S19M2K6B	45.72	48.26	39	FHG25403-S39M2K6B	96.52	99.06
20	FHG25403-S20M2K6B	48.26	50.80	40	FHG25403-S40M2K6B	99.06	101.60

 THIRD ANGLE PROJECTION	GENERAL TOLERANCES (UNLESS SPECIFIED)		APPROVE BY FRANK	DATE 25/JUN/13	PART NO. FHG25403-SXXM2K6B	ITEM NO. FHG25403	 Leader Of Industry	
	DESIGN UNITS Metric	X.±0.30	X.±5'	CHECKED BY JACOB	DATE 25/JUN/13	TITLE Wire to Board Pitch 2.54mm(Housing)		
		X.XX±0.20	.X'±2'	DRAWN BY CHERRY	DATE 25/JUN/13	REV 1		SHEET NO. 2/2
		SCALE 5:1	SIZE A4	X.XX±0.15	.XX'±1'	THIS DRAWING CONTAINS INFORMATION THAT IS PROPRIETARY TO TXGA INDUSTRIAL ELECTRONICS(S.Z)CO.,LTD AND SHOULD NOT BE USED WITHOUT WRITTEN PERMISSION		
	X.XXX±0.10	.XXX'±0.5'						